

ACME WALL-WASHER

Φ68 Engine

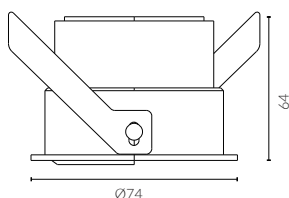
Fixed Round Wall Wash Downlight



cutout :68mm



Wall Wash Optic



bezel | baffle



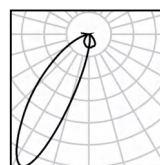
White Painted 9016



Black Painted 9005

| | |
|-------------------|---|
| IP Rating: | IP20 and IP44 options |
| Optics: | Asymmetrical Wallwash |
| UGR: | <10 |
| CRI: | 98Ra |
| Lifetime: | >50,000 hrs (L70 B10) |
| CCT: | 2700K/3000K/3500K/4000K/5000K/ 2000K-3000K/1800K-4000K/2700K-6000K |

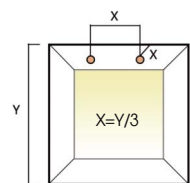
| | |
|--|---|
| Typical Source Efficacy (lm/W): | 110 |
| Control: | On/off, Mains Dim, 0/1-10V, Dali, Zigbee, Casambi |
| Binning | 2 Step MacAdams |
| Input: | AC220-240V 50/60Hz |
| Output: | DC 36V 350mA 15W |
| Ambient temp: | -20 °C to 45 °C |
| Class: | II |
| Ceiling Thickness: | 9mm-28mm |
| Material: | Fine aluminium 6063A |
| Fire resistance test: | 60 minutes |



15W Ra98 3000K

Asymmetrical

| h(m) | E(lx) | D(m) |
|------|-------|------|
| 0.5 | 50 | 0.82 |
| 1.0 | 12 | 1.64 |
| 1.5 | 6 | 2.46 |
| 2.0 | 3 | 3.27 |
| 2.5 | 2 | 4.09 |
| 3.0 | 1 | 4.91 |



X = distance to wall
= ceiling height ÷ 3



| W system | lm system | optics | code |
|----------|-----------|-----------------------|----------------|
| 15W | 448 | Asymmetrical Wallwash | MFL6815W-30NWS |



Black Nickel



Solid Brass



Antique Bronze



Black Painted 9005



White Painted 9016



Brushed Grey



Polished Chrome

Our light fixtures are made of the highest quality metal materials, like pure aluminium and solid brass. Our process is precise and sustainable to achieve circular products that last longer and look stylish.

The ACME light engines come in three distinct shapes: straight baffle for maximum brightness, curve baffle for a softer light effect, and semi-recessed baffle for added ceiling decoration. They are available in five different sizes with both trimmed and trimless bezels (cutouts of 50mm, 57mm, 68mm, and 78mm) and offered in seven standard finishes including white 9016, black 9005, polished chrome, black nickel, antique bronze, and solid brass.



ACME STRAIGHT



ACME CURVE

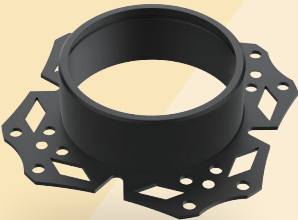


ACME SEMI

We transform premium materials into fine luxury goods that elevate any space.



Light engine



Installation frame trimless



Installation frame trim

Circular economy principles are intricately woven into every stage of our design and manufacturing process, making ACME downlights a shining example of sustainability. These fixtures are fully modular, allowing for easy repair, reuse, and end-of-life reintroduction into standard stock.

Safety wire



Accessories

Spread



Double Asymmetric



Honeycomb



Red filter



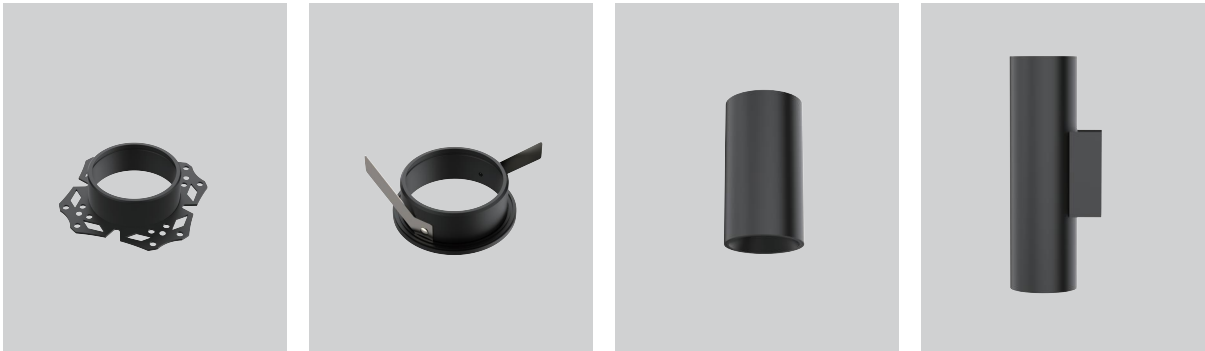
Blue filter



Amber filter



Accessories



Light Engines



Specification Code

| Type | Engine | Power | Colour Temp | Driver | Beam Width | Bezel Colour | Baffle Colour | Options |
|-----------------|---------|-------|------------------|-------------|--------------|--------------------|--------------------|----------------|
| MFL | 50 | 08W | 30 | N | 24 | W | B | S |
| MFL/Fixed | 36/36mm | | 27/2700K | M/Mains Dim | 10/10° | W/White | W/White | H/Honeycomb |
| AFL/Adjustable | 50/50mm | | 30/3000K | D/DALI | 15/15° | B/Black | B/Black | S/Spread Lense |
| TL/Trimless | 57/57mm | | 35/3500K | 0/0-10V | 24/24° | BG/Brushed Grey | BG/Brushed Grey | |
| Q/Square | 68/68mm | | 40/4000K | Z/Zigbee | 36/36° | BN/Black Nickel | BN/Black Nickel | |
| C/ Curve | 78/78mm | | 50/5000K | C/Casambi | 50/50° | AB/Antique Bronze | AB/Antique Bronze | |
| M/Semi-Recessed | | | 2030/2000K-3000K | N/Non Dim | WS/Wall Wash | SB/Solid Brass | SB/Solid Brass | |
| RTP/Recessed | | | 1840/1800K-4000K | X/No Driver | | PC/Polished Chrome | PC/Polished Chrome | |
| Pendant | | | 2760/2700K-6000K | | | | | |
| TLP/ Trimless | | | | | | | | |
| Pendant | | | | | | | | |
| STP/Surface | | | | | | | | |
| Pendant | | | | | | | | |
| MPW/48V Pendant | | | | | | | | |