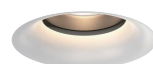
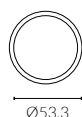
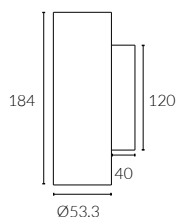


# ACME

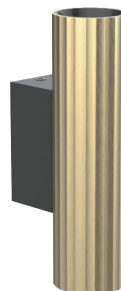
## Φ57 Engine Wall Light



Fixed Optic



optional curve baffle



bespokable  
Faceted Brass



White Painted



Black Painted



Brushed Grey



Antique Bronze



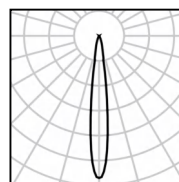
Solid Brass



Faceted Brass

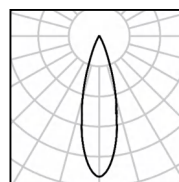
<b>IP Rating:</b>	IP20 and IP44 options
<b>Optics:</b>	15°/24°/36°
<b>UGR:</b>	<10
<b>CRI:</b>	98Ra
<b>Lifetime:</b>	>50,000 hrs (L70 B10)
<b>CCT:</b>	2700K/3000K/3500K/4000K/5000K/ 2000K-3000K/1800K-4000K/2700K-6000K

<b>Typical Source</b>	110
<b>Efficacy (lm/W):</b>	110
<b>Control:</b>	On/off, Mains Dim, 0/1-10V, Dali, Zigbee, Casambi
<b>Binning</b>	2 Step MacAdams
<b>Input:</b>	AC220-240V 50/60Hz
<b>Output:</b>	DC 36V 250mA 10Wx2
<b>Ambient temp:</b>	-20 °C to 45 °C
<b>Class:</b>	II
<b>Optional accessories:</b>	Honeycomb louvre, Solite Lense, Spread Lense, Colour Filter
<b>Material:</b>	Fine aluminium 6063A



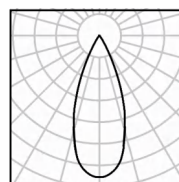
10W Ra98 3000K 15°

h(m)	E(lx)	D(m)
0.5	10728	0.15
1.0	2682	0.31
1.5	1192	0.46
2.0	671	0.61
2.5	429	0.77
3.0	298	0.92



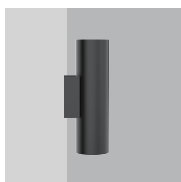
10W Ra98 3000K 24°

h(m)	E(lx)	D(m)
0.5	7580	0.21
1.0	1895	0.42
1.5	842	0.63
2.0	474	0.84
2.5	303	1.04
3.0	211	1.25



10W Ra98 3000K 36°

h(m)	E(lx)	D(m)
0.5	4206	0.28
1.0	1051	0.57
1.5	467	0.85
2.0	263	1.14
2.5	168	1.42
3.0	117	1.71



<b>W system</b>	<b>lm system</b>	<b>optics</b>	<b>code</b>
10Wx 2	462x 2	15°	WE5710WX2-30N15-B
10Wx 2	628x 2	24°	WE5710WX2-30N24-B
10Wx 2	616x 2	36°	WE5710WX2-30N36-B

ACME



Black Nickel



Solid Brass



Antique Bronze



Black Painted 9005



White Painted 9016



Brushed Grey



Polished Chrome

Our light fixtures are made of the highest quality metal materials, like pure aluminium and solid brass. Our process is precise and sustainable to achieve circular products that last longer and look stylish.

The ACME light engines come in three distinct shapes: straight baffle for maximum brightness, curve baffle for a softer light effect, and semi-recessed baffle for added ceiling decoration. They are available in five different sizes with both trimmed and trimless bezels (cutouts of 50mm, 57mm, 68mm, and 78mm) and offered in seven standard finishes including white 9016, black 9005, polished chrome, black nickel, antique bronze, and solid brass.



ACME STRAIGHT



ACME CURVE

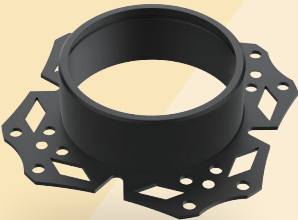


ACME SEMI

We transform premium materials into fine luxury goods that elevate any space.



Light engine



Installation frame trimless



Installation frame trim

Circular economy principles are intricately woven into every stage of our design and manufacturing process, making ACME downlights a shining example of sustainability. These fixtures are fully modular, allowing for easy repair, reuse, and end-of-life reintroduction into standard stock.

Safety wire



Accessories

Spread



Double Asymmetric



Honeycomb



Red filter



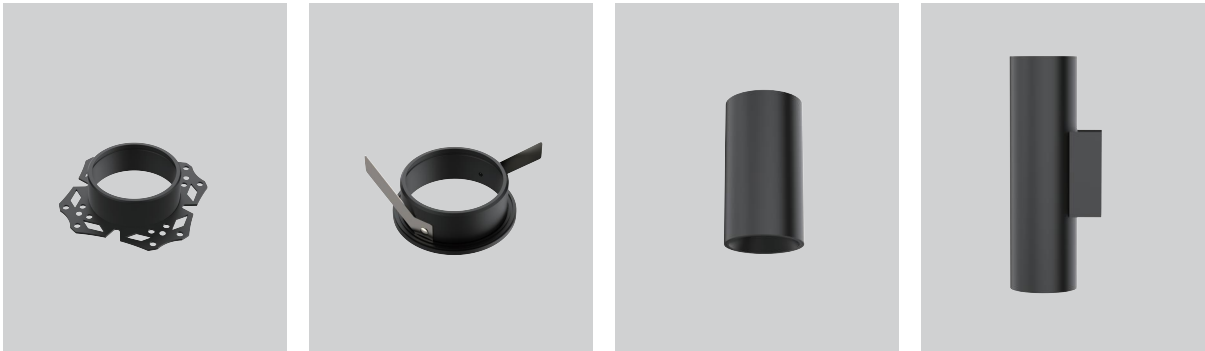
Blue filter



Amber filter



Accessories



Light Engines



Specification Code

Type	Engine	Power	Colour Temp	Driver	Beam Width	Bezel Colour	Baffle Colour	Options
MFL	50	08W	30	N	24	W	B	S
MFL/Fixed	36/36mm		27/2700K	M/Mains Dim	10/10°	W/White	W/White	H/Honeycomb
AFL/Adjustable	50/50mm		30/3000K	D/DALI	15/15°	B/Black	B/Black	S/Spread Lense
TL/Trimless	57/57mm		35/3500K	0/0-10V	24/24°	BG/Brushed Grey	BG/Brushed Grey	
Q/Square	68/68mm		40/4000K	Z/Zigbee	36/36°	BN/Black Nickel	BN/Black Nickel	
C/ Curve	78/78mm		50/5000K	C/Casambi	50/50°	AB/Antique Bronze	AB/Antique Bronze	
M/Semi-Recessed			2030/2000K-3000K	N/Non Dim	WS/Wall Wash	SB/Solid Brass	SB/Solid Brass	
RTP/Recessed			1840/1800K-4000K	X/No Driver		PC/Polished Chrome	PC/Polished Chrome	
Pendant			2760/2700K-6000K					
TLP/ Trimless								
Pendant								
STP/Surface								
Pendant								
MPW/48V Pendant								